

Attachment B

Proposed Drawings

CIRCULAR QUAY PLAZA BUILDING AND GEORGE STREET PLAZA

180 GEORGE STREET, SYDNEY NSW 2000
ARCHITECTURAL DRAWINGS - DEVELOPMENT APPLICATION

DRAWING LIST

DRAWING NO.	TITLE	DATE	REV.
000000 Notes and Symbols DA_COC_AD000001	Coverpage, Drawing List & General Notes	08/11/2019	0.1
000000 Site Plans DA_COC_AD000201	Site Plan - George St. Plaza - Overall	08/11/2019	0.1
200000 Plans Nominal Ground DA_COC_AD202200	GA Plan - Upper Ground - Zone 2	08/11/2019	0.1
300000 Plans Above Nominal Ground			
DA_COC_AD301200	GA Plan - Level 01	08/11/2019	0.1
DA_COC_AD302200	GA Plan - Level 02	08/11/2019	0.1
DA_COC_AD303200	GA Plan - Roof Rainscreen Cladding	08/11/2019	0.1
DA_COC_AD304200	GA Plan - Roof Fenestration	08/11/2019	0.1
DA_COC_AD305200	GA Plan - Canopy	08/11/2019	0.1
400000 Elevations			
DA_COC_AD410200	GA Elevation - South - Zone 2	08/11/2019	0.1
DA_COC_AD420200	GA Elevation - West - Zone 2	08/11/2019	0.1
DA_COC_AD430200	GA Elevation - North - Zone 2	08/11/2019	0.1
DA_COC_AD440200	GA Elevation - East - Zone 2	08/11/2019	0.1
500000 Sections			
DA_COC_AD511200	GA Section - Long Sections - Zone 2	08/11/2019	0.1
DA_COC_AD521200	GA Section - Cross Sections 1 - Zone 2	08/11/2019	0.1
DA_COC_AD522200	GA Section - Cross Sections 2 - Zone 2	08/11/2019	0.1

75



GENERAL NOTES:

- Do not scale from this drawing.
- All dimensions are in millimetres unless noted otherwise.
- All levels are in metres unless noted otherwise.
- First use and fit out of Upper Ground floor tenancy is subject to separate application for development consent - Intended for use as a cafe.
- The dimensions and position of openings in the Artwork Canopy and the associate pattern of the feature paving and design of the tree grille, will be subject to design development and final sign off by the art Galleries Board.
- Final arrangement of furniture to be agreed with the City of Sydney under the Voluntary Planning Agreement.
- Refer to approved drawings for DA2017/1620, including drawings approved under Condition 4.
- Refer to the following design documents submitted as part of this application for development consent:
 - Architectural drawings for the link bridge, prepared by Foster + Partners;
 - Civil package prepared by Carotro.
- These drawings are not to be used for construction.

- LLCO SITE BOUNDARY
- DA BOUNDARY

Principal Architect:

Adjaye Associates
The Adjaye Group, 27-31, Colindale Avenue, London NW9 1SZ, UK
Phone: +44 (0)20 2338 4100
www.adjaye.com

Collaborating Architect:

architectus™
118, McKinnon Street, Melbourne, Victoria, Australia
T: +61 3 8323 8400 F: +61 3 8323 8600
www.architectus.com.au

Client / Developer:

Lendlease Circular Quay
Plaza Building and George Street Plaza
180 George Street SYDNEY NSW 2000

Date:

08/11/2019

Drawing Title:

Coverpage, Drawing List & General Notes
Drawing No.:
DA_COC_AD000001

Revision:

0.1

Scale:

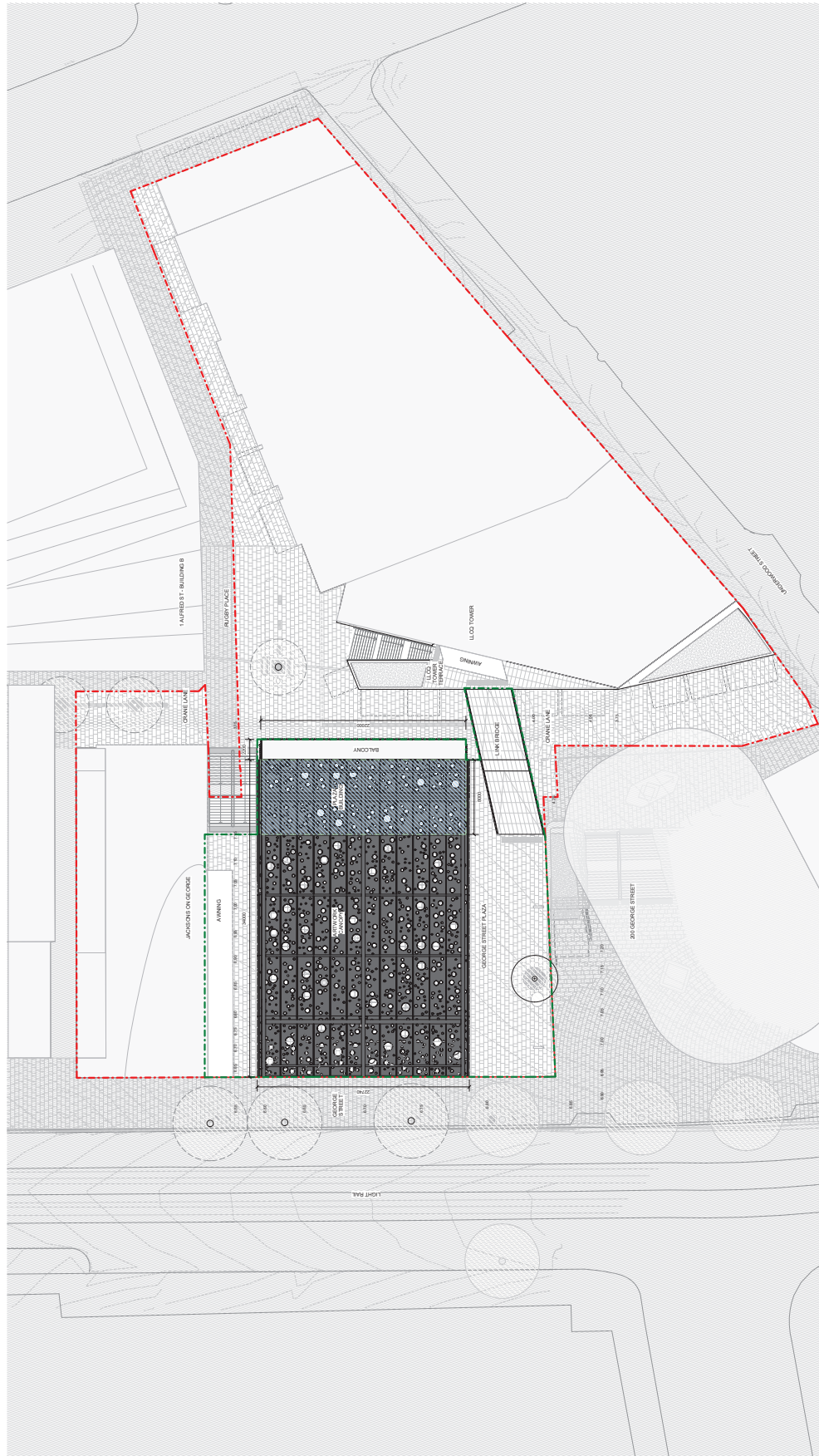
N/A

Project Status:

Development Application
08/17/2019
Date
0.1 For Development Application
Date
For Review For Issue



GENERAL NOTES:
 Do not scale from this drawing.
 All dimensions are in millimetres unless noted otherwise.
 All levels are in metres unless noted otherwise.
 First use and fit out of Upper Ground floor tenancy is subject to separate application for development consent - intended for use as a cafe.
 The dimensions and position of openings in the Atwork canopy and the associate pattern of the feature paving and lighting are subject to separate application for development consent and final sign off by the artist Daniel Boyd.
 Final arrangement of furniture to be agreed with the City of Sydney under the Voluntary Planning Agreement.
 Refer to approved drawings for DA 020171020, including drawings approved under Condition 4.
 Refer to the following design documents, submitted as part of this Development Application including:
 - Architectural drawings for the link bridge, prepared by Foster + Wheeler
 - Civil package prepared by Cadbro.
 These drawings are not to be used for construction.



--- LLCO SITE BOUNDARY
 --- DA BOUNDARY

Principal Architect

Adjaye Associates

The Office: 11, 12, 13, 14, 15, 16, 17, 18, 19, 20, 21, 22, 23, 24, 25, 26, 27, 28, 29, 30, 31, 32, 33, 34, 35, 36, 37, 38, 39, 40, 41, 42, 43, 44, 45, 46, 47, 48, 49, 50, 51, 52, 53, 54, 55, 56, 57, 58, 59, 60, 61, 62, 63, 64, 65, 66, 67, 68, 69, 70, 71, 72, 73, 74, 75, 76, 77, 78, 79, 80, 81, 82, 83, 84, 85, 86, 87, 88, 89, 90, 91, 92, 93, 94, 95, 96, 97, 98, 99, 100
 The Office: 11, 12, 13, 14, 15, 16, 17, 18, 19, 20, 21, 22, 23, 24, 25, 26, 27, 28, 29, 30, 31, 32, 33, 34, 35, 36, 37, 38, 39, 40, 41, 42, 43, 44, 45, 46, 47, 48, 49, 50, 51, 52, 53, 54, 55, 56, 57, 58, 59, 60, 61, 62, 63, 64, 65, 66, 67, 68, 69, 70, 71, 72, 73, 74, 75, 76, 77, 78, 79, 80, 81, 82, 83, 84, 85, 86, 87, 88, 89, 90, 91, 92, 93, 94, 95, 96, 97, 98, 99, 100
 Phone: +44 (0)20 7518 4140
 email: info@adjaye.com

Collaborating Architect:

architectus

18, 19, 20, 21, 22, 23, 24, 25, 26, 27, 28, 29, 30, 31, 32, 33, 34, 35, 36, 37, 38, 39, 40, 41, 42, 43, 44, 45, 46, 47, 48, 49, 50, 51, 52, 53, 54, 55, 56, 57, 58, 59, 60, 61, 62, 63, 64, 65, 66, 67, 68, 69, 70, 71, 72, 73, 74, 75, 76, 77, 78, 79, 80, 81, 82, 83, 84, 85, 86, 87, 88, 89, 90, 91, 92, 93, 94, 95, 96, 97, 98, 99, 100
 18, 19, 20, 21, 22, 23, 24, 25, 26, 27, 28, 29, 30, 31, 32, 33, 34, 35, 36, 37, 38, 39, 40, 41, 42, 43, 44, 45, 46, 47, 48, 49, 50, 51, 52, 53, 54, 55, 56, 57, 58, 59, 60, 61, 62, 63, 64, 65, 66, 67, 68, 69, 70, 71, 72, 73, 74, 75, 76, 77, 78, 79, 80, 81, 82, 83, 84, 85, 86, 87, 88, 89, 90, 91, 92, 93, 94, 95, 96, 97, 98, 99, 100
 T: +44 (0)20 7518 4140 F: +44 (0)20 7518 4140
 www.architectus.com

Client / Developer:



Lendlease
 Level 14, 15, 16, 17, 18, 19, 20, 21, 22, 23, 24, 25, 26, 27, 28, 29, 30, 31, 32, 33, 34, 35, 36, 37, 38, 39, 40, 41, 42, 43, 44, 45, 46, 47, 48, 49, 50, 51, 52, 53, 54, 55, 56, 57, 58, 59, 60, 61, 62, 63, 64, 65, 66, 67, 68, 69, 70, 71, 72, 73, 74, 75, 76, 77, 78, 79, 80, 81, 82, 83, 84, 85, 86, 87, 88, 89, 90, 91, 92, 93, 94, 95, 96, 97, 98, 99, 100
 International Tower 2 Sydney
 Barangaroo NSW 2000

Project Description:

Lendlease Circular Quay
 Plaza Building and George Street Plaza
 180 George Street SYDNEY NSW 2000

Date:

08/11/2019

Project Status:

Development Application

Drawing Title:

Site Plan - George Sr. Plaza - Overall

Drawing No.:

DA_CQC_AD000201

Revision:

0.1

Scale:

1 : 200 @ B1

Rev	Description	Date
0.1	For Development Application	08/11/2019
0.2	Revised For Issue	



GENERAL NOTES:

- Do not scale from this drawing.
- All dimensions are in millimetres unless noted otherwise.
- All levels are in metres unless noted otherwise.
- Fixtures and fit out of Upper Ground floor tenancy is subject to separate application for development consent - intended for use as a cafe.
- The dimensions and position of openings in the Airwork Canopy and the associate pattern of the feature paving and landscaping are subject to separate application for development consent and final sign off by the artist David Boyd.
- Final arrangement of furniture to be agreed with the City of Sydney under the Voluntary Planning Agreement.
- Refer to approved drawings for DA C001711620, including drawings approved under Condition 4.
- Refer to the following design documents, submitted as part of this Development Application including:
 - Architectural drawings for the link bridge, prepared by Foster + Wheeler
 - Civil package prepared by Cadbro.
- These drawings are not to be used for construction.

LEGEND:

- Lend Lease Circular Quay Site Boundary
- - - DA Boundary
- Works outside of LLOD Boundary
- George Street Plaza Paving with patterns with David Boyd, COS Black Granite paving
- 200 George St Existing Paving Black Granite paving
- COS standard to path paving - COS Black Granite paving
- Tower entry ramp, bridge and terrace paving - COS Black Granite paving
- COS standard 001, 01h, 02h, 03h, 04h, 05h, 06h, 07h, 08h, 09h, 10h, 11h, 12h, 13h, 14h, 15h, 16h, 17h, 18h, 19h, 20h, 21h, 22h, 23h, 24h, 25h, 26h, 27h, 28h, 29h, 30h, 31h, 32h, 33h, 34h, 35h, 36h, 37h, 38h, 39h, 40h, 41h, 42h, 43h, 44h, 45h, 46h, 47h, 48h, 49h, 50h, 51h, 52h, 53h, 54h, 55h, 56h, 57h, 58h, 59h, 60h, 61h, 62h, 63h, 64h, 65h, 66h, 67h, 68h, 69h, 70h, 71h, 72h, 73h, 74h, 75h, 76h, 77h, 78h, 79h, 80h, 81h, 82h, 83h, 84h, 85h, 86h, 87h, 88h, 89h, 90h, 91h, 92h, 93h, 94h, 95h, 96h, 97h, 98h, 99h, 100h, 101h, 102h, 103h, 104h, 105h, 106h, 107h, 108h, 109h, 110h, 111h, 112h, 113h, 114h, 115h, 116h, 117h, 118h, 119h, 120h, 121h, 122h, 123h, 124h, 125h, 126h, 127h, 128h, 129h, 130h, 131h, 132h, 133h, 134h, 135h, 136h, 137h, 138h, 139h, 140h, 141h, 142h, 143h, 144h, 145h, 146h, 147h, 148h, 149h, 150h, 151h, 152h, 153h, 154h, 155h, 156h, 157h, 158h, 159h, 160h, 161h, 162h, 163h, 164h, 165h, 166h, 167h, 168h, 169h, 170h, 171h, 172h, 173h, 174h, 175h, 176h, 177h, 178h, 179h, 180h, 181h, 182h, 183h, 184h, 185h, 186h, 187h, 188h, 189h, 190h, 191h, 192h, 193h, 194h, 195h, 196h, 197h, 198h, 199h, 200h, 201h, 202h, 203h, 204h, 205h, 206h, 207h, 208h, 209h, 210h, 211h, 212h, 213h, 214h, 215h, 216h, 217h, 218h, 219h, 220h, 221h, 222h, 223h, 224h, 225h, 226h, 227h, 228h, 229h, 230h, 231h, 232h, 233h, 234h, 235h, 236h, 237h, 238h, 239h, 240h, 241h, 242h, 243h, 244h, 245h, 246h, 247h, 248h, 249h, 250h, 251h, 252h, 253h, 254h, 255h, 256h, 257h, 258h, 259h, 260h, 261h, 262h, 263h, 264h, 265h, 266h, 267h, 268h, 269h, 270h, 271h, 272h, 273h, 274h, 275h, 276h, 277h, 278h, 279h, 280h, 281h, 282h, 283h, 284h, 285h, 286h, 287h, 288h, 289h, 290h, 291h, 292h, 293h, 294h, 295h, 296h, 297h, 298h, 299h, 300h, 301h, 302h, 303h, 304h, 305h, 306h, 307h, 308h, 309h, 310h, 311h, 312h, 313h, 314h, 315h, 316h, 317h, 318h, 319h, 320h, 321h, 322h, 323h, 324h, 325h, 326h, 327h, 328h, 329h, 330h, 331h, 332h, 333h, 334h, 335h, 336h, 337h, 338h, 339h, 340h, 341h, 342h, 343h, 344h, 345h, 346h, 347h, 348h, 349h, 350h, 351h, 352h, 353h, 354h, 355h, 356h, 357h, 358h, 359h, 360h, 361h, 362h, 363h, 364h, 365h, 366h, 367h, 368h, 369h, 370h, 371h, 372h, 373h, 374h, 375h, 376h, 377h, 378h, 379h, 380h, 381h, 382h, 383h, 384h, 385h, 386h, 387h, 388h, 389h, 390h, 391h, 392h, 393h, 394h, 395h, 396h, 397h, 398h, 399h, 400h, 401h, 402h, 403h, 404h, 405h, 406h, 407h, 408h, 409h, 410h, 411h, 412h, 413h, 414h, 415h, 416h, 417h, 418h, 419h, 420h, 421h, 422h, 423h, 424h, 425h, 426h, 427h, 428h, 429h, 430h, 431h, 432h, 433h, 434h, 435h, 436h, 437h, 438h, 439h, 440h, 441h, 442h, 443h, 444h, 445h, 446h, 447h, 448h, 449h, 450h, 451h, 452h, 453h, 454h, 455h, 456h, 457h, 458h, 459h, 460h, 461h, 462h, 463h, 464h, 465h, 466h, 467h, 468h, 469h, 470h, 471h, 472h, 473h, 474h, 475h, 476h, 477h, 478h, 479h, 480h, 481h, 482h, 483h, 484h, 485h, 486h, 487h, 488h, 489h, 490h, 491h, 492h, 493h, 494h, 495h, 496h, 497h, 498h, 499h, 500h, 501h, 502h, 503h, 504h, 505h, 506h, 507h, 508h, 509h, 510h, 511h, 512h, 513h, 514h, 515h, 516h, 517h, 518h, 519h, 520h, 521h, 522h, 523h, 524h, 525h, 526h, 527h, 528h, 529h, 530h, 531h, 532h, 533h, 534h, 535h, 536h, 537h, 538h, 539h, 540h, 541h, 542h, 543h, 544h, 545h, 546h, 547h, 548h, 549h, 550h, 551h, 552h, 553h, 554h, 555h, 556h, 557h, 558h, 559h, 560h, 561h, 562h, 563h, 564h, 565h, 566h, 567h, 568h, 569h, 570h, 571h, 572h, 573h, 574h, 575h, 576h, 577h, 578h, 579h, 580h, 581h, 582h, 583h, 584h, 585h, 586h, 587h, 588h, 589h, 590h, 591h, 592h, 593h, 594h, 595h, 596h, 597h, 598h, 599h, 600h, 601h, 602h, 603h, 604h, 605h, 606h, 607h, 608h, 609h, 610h, 611h, 612h, 613h, 614h, 615h, 616h, 617h, 618h, 619h, 620h, 621h, 622h, 623h, 624h, 625h, 626h, 627h, 628h, 629h, 630h, 631h, 632h, 633h, 634h, 635h, 636h, 637h, 638h, 639h, 640h, 641h, 642h, 643h, 644h, 645h, 646h, 647h, 648h, 649h, 650h, 651h, 652h, 653h, 654h, 655h, 656h, 657h, 658h, 659h, 660h, 661h, 662h, 663h, 664h, 665h, 666h, 667h, 668h, 669h, 670h, 671h, 672h, 673h, 674h, 675h, 676h, 677h, 678h, 679h, 680h, 681h, 682h, 683h, 684h, 685h, 686h, 687h, 688h, 689h, 690h, 691h, 692h, 693h, 694h, 695h, 696h, 697h, 698h, 699h, 700h, 701h, 702h, 703h, 704h, 705h, 706h, 707h, 708h, 709h, 710h, 711h, 712h, 713h, 714h, 715h, 716h, 717h, 718h, 719h, 720h, 721h, 722h, 723h, 724h, 725h, 726h, 727h, 728h, 729h, 730h, 731h, 732h, 733h, 734h, 735h, 736h, 737h, 738h, 739h, 740h, 741h, 742h, 743h, 744h, 745h, 746h, 747h, 748h, 749h, 750h, 751h, 752h, 753h, 754h, 755h, 756h, 757h, 758h, 759h, 760h, 761h, 762h, 763h, 764h, 765h, 766h, 767h, 768h, 769h, 770h, 771h, 772h, 773h, 774h, 775h, 776h, 777h, 778h, 779h, 780h, 781h, 782h, 783h, 784h, 785h, 786h, 787h, 788h, 789h, 790h, 791h, 792h, 793h, 794h, 795h, 796h, 797h, 798h, 799h, 800h, 801h, 802h, 803h, 804h, 805h, 806h, 807h, 808h, 809h, 810h, 811h, 812h, 813h, 814h, 815h, 816h, 817h, 818h, 819h, 820h, 821h, 822h, 823h, 824h, 825h, 826h, 827h, 828h, 829h, 830h, 831h, 832h, 833h, 834h, 835h, 836h, 837h, 838h, 839h, 840h, 841h, 842h, 843h, 844h, 845h, 846h, 847h, 848h, 849h, 850h, 851h, 852h, 853h, 854h, 855h, 856h, 857h, 858h, 859h, 860h, 861h, 862h, 863h, 864h, 865h, 866h, 867h, 868h, 869h, 870h, 871h, 872h, 873h, 874h, 875h, 876h, 877h, 878h, 879h, 880h, 881h, 882h, 883h, 884h, 885h, 886h, 887h, 888h, 889h, 890h, 891h, 892h, 893h, 894h, 895h, 896h, 897h, 898h, 899h, 900h, 901h, 902h, 903h, 904h, 905h, 906h, 907h, 908h, 909h, 910h, 911h, 912h, 913h, 914h, 915h, 916h, 917h, 918h, 919h, 920h, 921h, 922h, 923h, 924h, 925h, 926h, 927h, 928h, 929h, 930h, 931h, 932h, 933h, 934h, 935h, 936h, 937h, 938h, 939h, 940h, 941h, 942h, 943h, 944h, 945h, 946h, 947h, 948h, 949h, 950h, 951h, 952h, 953h, 954h, 955h, 956h, 957h, 958h, 959h, 960h, 961h, 962h, 963h, 964h, 965h, 966h, 967h, 968h, 969h, 970h, 971h, 972h, 973h, 974h, 975h, 976h, 977h, 978h, 979h, 980h, 981h, 982h, 983h, 984h, 985h, 986h, 987h, 988h, 989h, 990h, 991h, 992h, 993h, 994h, 995h, 996h, 997h, 998h, 999h, 1000h
- Proposed outdoor seating zone
- Granite aggregate concrete seat building path
- Granite aggregate concrete seat 'pavement'
- Sandstone seat 'heritage grating stone'
- Fire hydrant cupboard on Chain Lane
- Light Pole

Principal Architect
Adjaye Associates
 The Adjaye Group, 15 Macquarie Road, London N1H 7DT, UK
 Phone +44 (0)20 7318 4140 F +44 (0)20 7318 4000
 www.theadjayedesign.com

Collaborating Architect:
architectus™
 11 Macquarie Street, Sydney NSW 2000
 T +61 2 9232 8400 F +61 2 9232 8600
 www.architectus.com.au

Client / Developer:

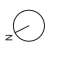

 Lend Lease
 International Tower Sydney
 Barangaroo NSW 2000

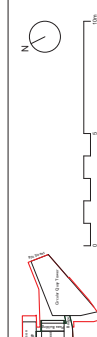
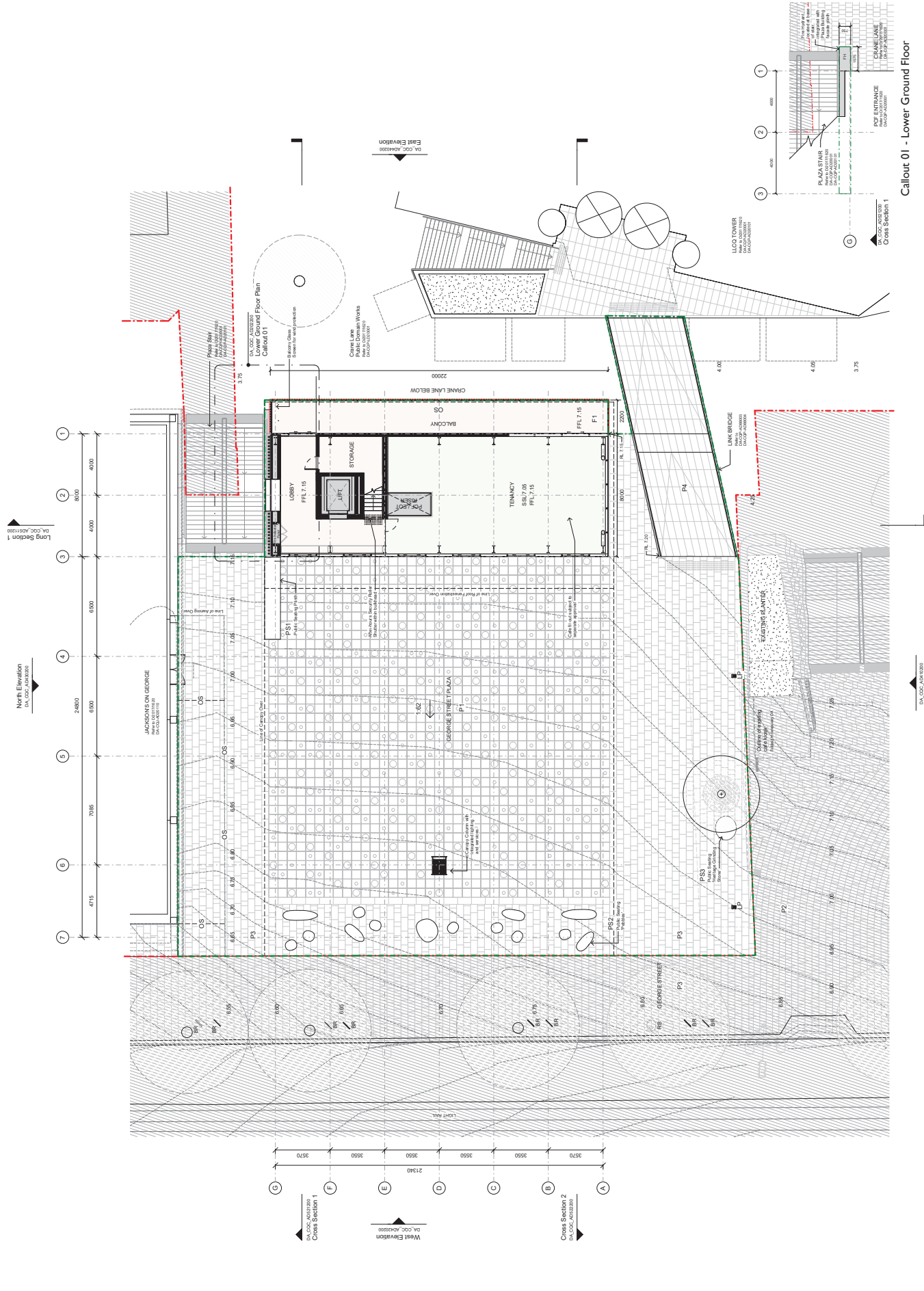
Project Description:
 Lend Lease Circular Quay
 Plaza Building and George Street Plaza
 180 George Street SYDNEY NSW 2000

Date: 08/11/2019
Project Status: Development Application

Drawing Title: GA Plan - Upper Ground - Zone 2
Drawing No.: DA_CQC_AD202200

Revision: 0.1
Scale: 1 : 100 @ B1

North



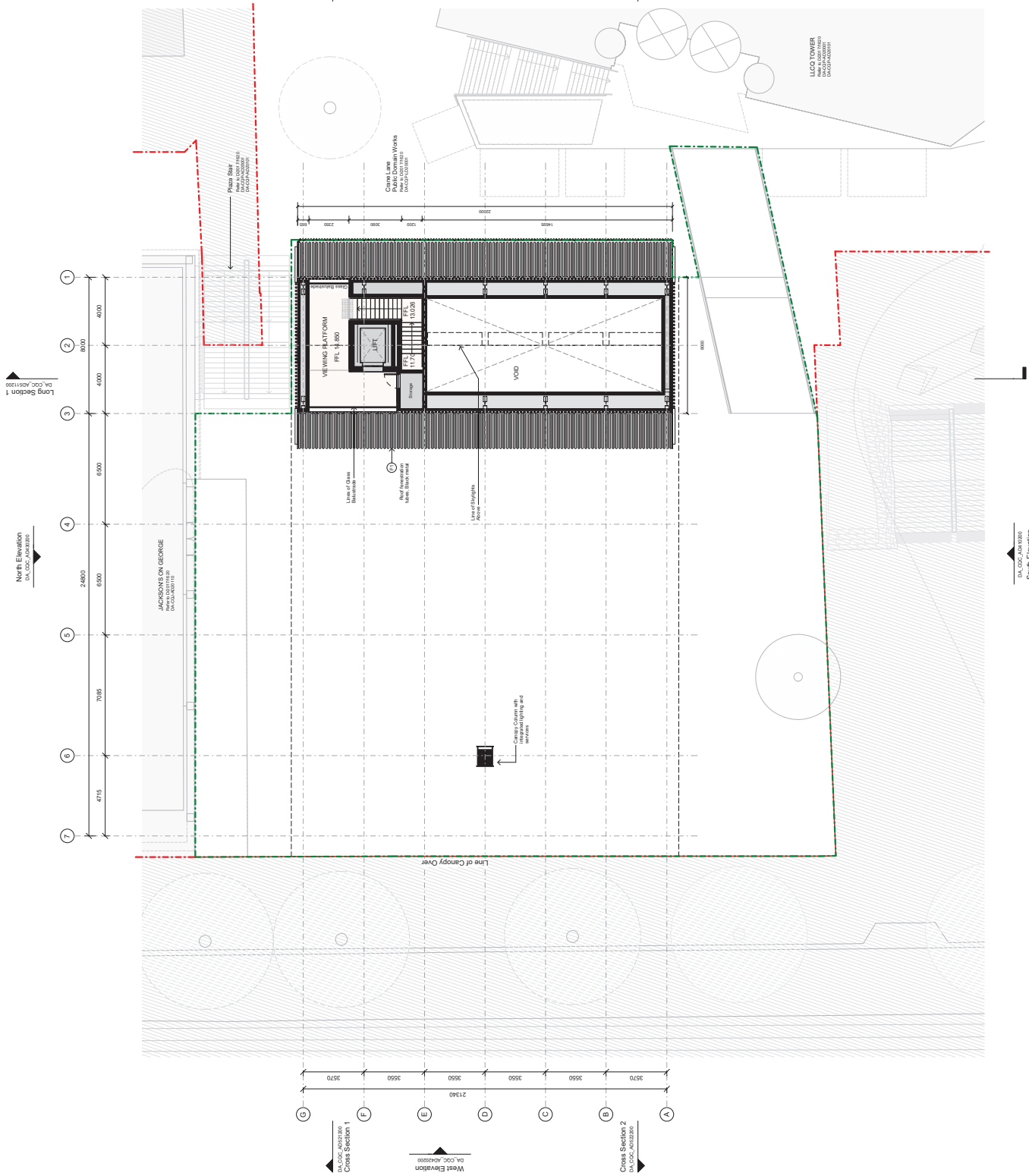


GENERAL NOTES:

- Do not scale from this drawing
- All dimensions are in millimetres unless noted otherwise.
- All levels are in metres unless noted otherwise.
- Fixtures and fit out of Upper Ground floor tenancy is subject to separate application for development consent - intended for use as a cafe.
- The dimensions and position of openings in the Network Canopy and the associate pattern of the feature paving and signage are subject to separate application for development consent and final sign off by the artist David Boyd.
- Final arrangement of furniture to be agreed with the City of Sydney under the Voluntary Planning Agreement.
- Refer to approved drawings for DA C021711620, including drawings approved under Condition 4.
- Refer to the following design documents, submitted as part of this Development Application including:
 - Architectural drawings for the link bridge, prepared by Foster + Wheeler
 - Civil package prepared by Cairbio.
- These drawings are not to be used for construction.

79

- LEGEND:**
- Lendlease Circular Quay Site Boundary
 - - - DA Boundary
 - ▨ Works outside of LLOD Boundary
 - ▧ George Street Plaza Paving with pattems by artist David Boyd - COS Black Granite paving
 - ▧ 200 George Street Paving Black Granite paving
 - ▧ LLOD COS standard togepath paving - COS Black Granite paving
 - ▧ Tower entry ramps, bridge and terrace paving - COS Black Granite paving
 - ▧ COS standard 80L by enclosure. In accordance with City North-Sydney Council's Network Canopy Specification 2015. Limited in accordance with City North-Sydney Council, subject to Condition 75 of main works DA.
 - ▧ Existing Trees to be retained
 - ▧ New trees by others
 - ▧ George Street Plaza trees. Subcontracted approx. 200L. Limited in accordance with City North-Sydney Council, subject to Condition 75 of main works DA.
 - ▧ Proposed outdoor seating zone
 - ▧ Granite aggregate concrete seat building jettif
 - ▧ Granite aggregate concrete seat 'podder'
 - ▧ Sandstone seat 'heritage grating stone'
 - ▧ Fire hydrant cupboard on Open Lane
 - ▧ Light Pole
 - ▧ Black Granite Paving
 - ▧ Timber Cladding
 - ▧ Cladding
 - ▧ Black Metal Fermentation Tubes
 - ▧ Black Metal Cladding



Principal Architect: **Adjaye Associates**
 18, MCC-Gallery 19 Macquarie Road, London N1H 7GT, UK
 Phone +44 (0)20 7588 4140
 email: info@adjaye.com

Collaborating Architect: **architectus™**
 18, MCC-Gallery 19 Macquarie Road, Sydney NSW 2000
 T +61 2 9252 8400 F +61 2 9252 8600
 www.architectus.com.au

Client / Developer: **Lendlease Circular Quay**
 Plaza Building and George Street Plaza
 180 George Street SYDNEY NSW 2000

Date: **08/11/2019**
 Project Status: **Development Application**

Drawing Title: **GA Plan - Level 02**
 Drawing No.: **DA_C02_AD302200**

Revision: **0.1**
 Scale: **1 : 100 @ B1**

08/11/2019
 0.1 For Development Application
 DA_C02_A01000
 DA_C02_A02000

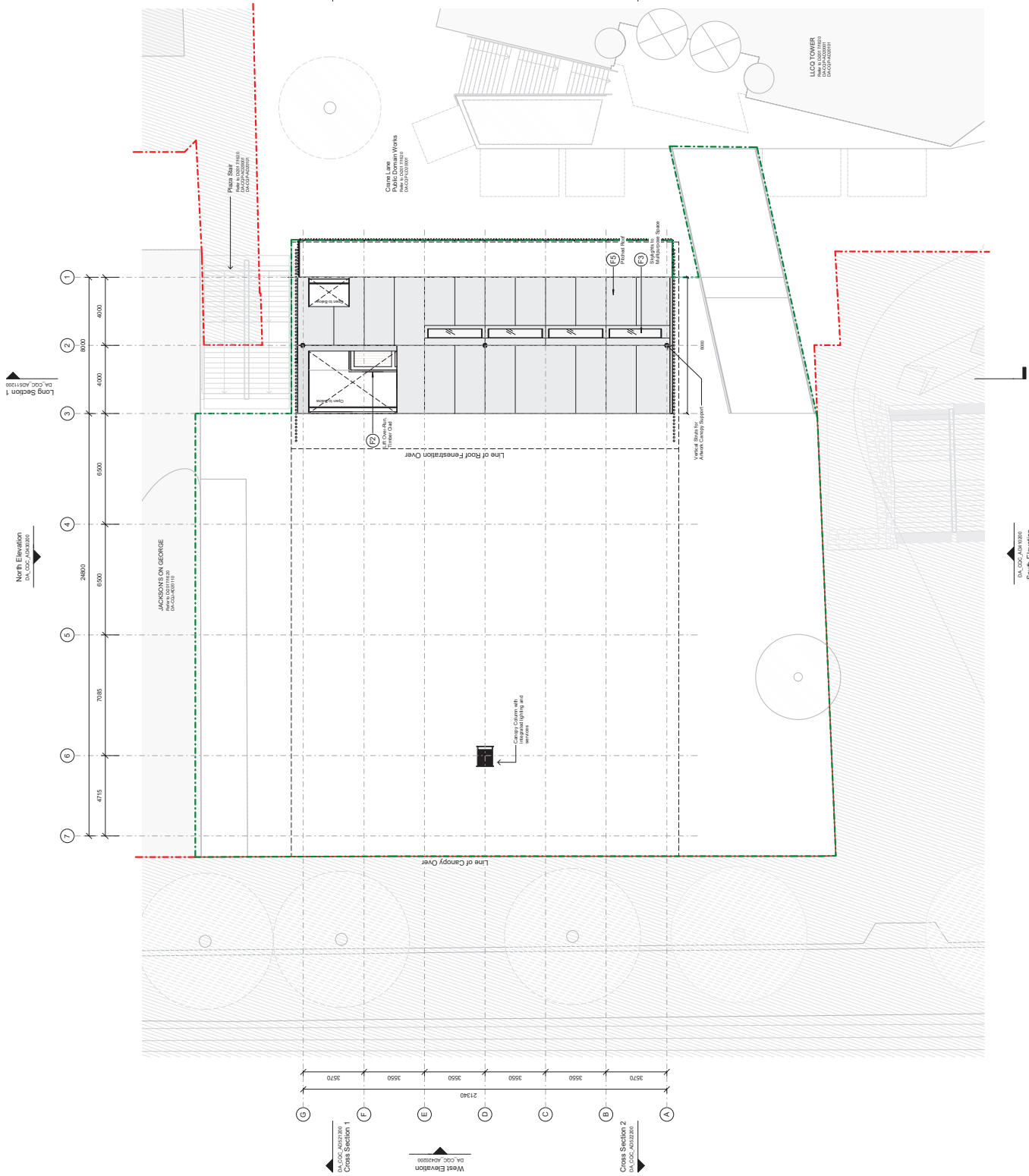
North
 0m
 10m
 20m

GENERAL NOTES:

- Do not scale from this drawing
- All dimensions are in millimetres unless noted otherwise.
- All levels are in metres unless noted otherwise.
- Fixturing and fit out of Upper Ground floor tenancy is subject to separate application for development consent - intended for use as a cafe.
- The dimensions and position of openings in the Network Canopy and the associate pattern of the feature paving and signage are subject to separate application for development consent and final sign off by the artist David Boyd.
- Final arrangement of furniture to be agreed with the City of Sydney under the Voluntary Planning Agreement.
- Refer to approved drawings for DA 0201711620, including drawings approved under Condition 4.
- Refer to the following design documents, submitted as part of this Development Application including:
 - Architectural drawings for the link bridge, prepared by Foster + Wheeler
 - Civil package prepared by Cairbio.
- These drawings are not to be used for construction.

80

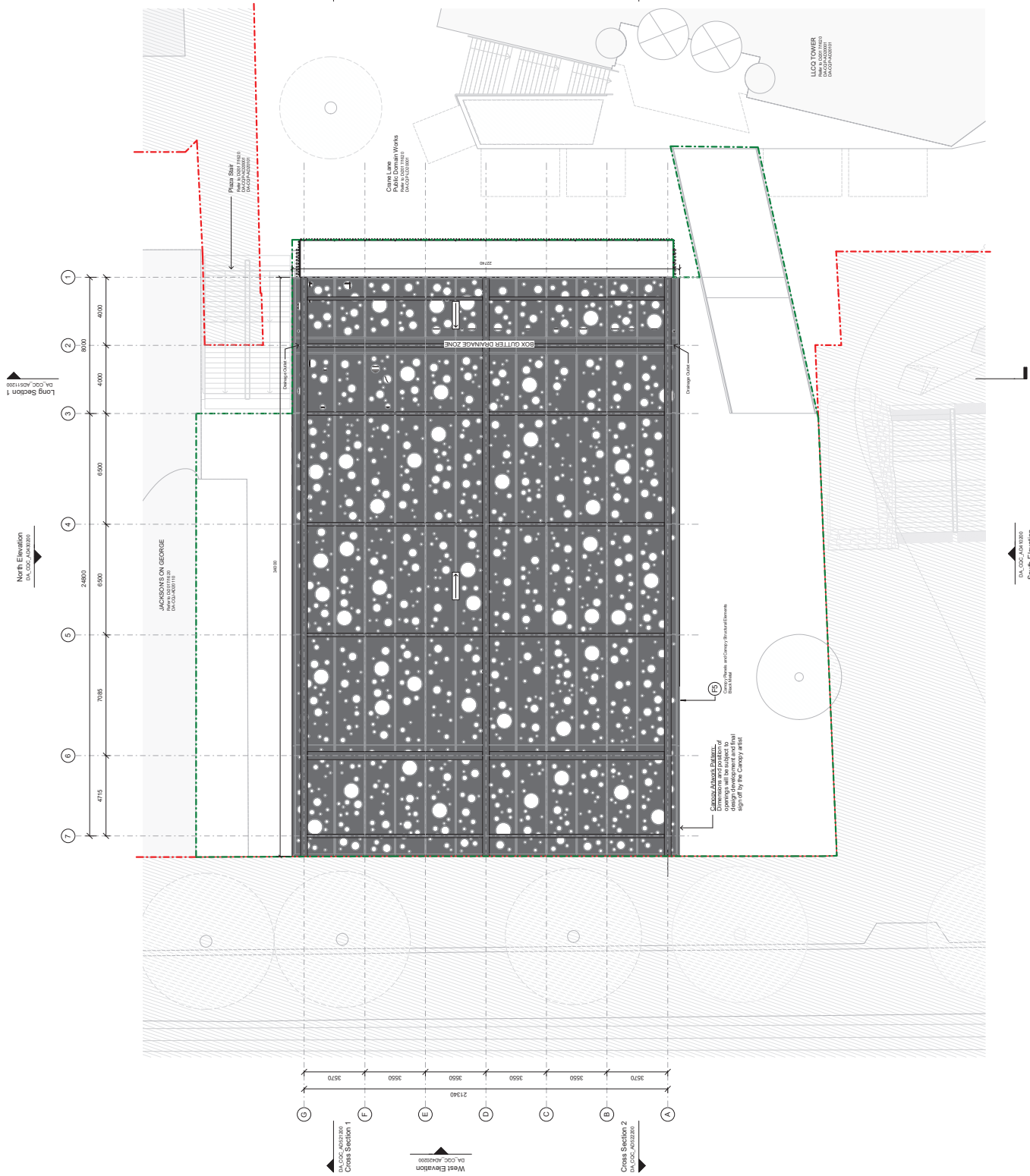
- LEGEND:**
- Lendlease Circular Quay Site Boundary
 - - - DA Boundary
 - ▨ Works outside of LLOO Boundary
 - ▨ George Street Plaza Paving with patterns by artist David Boyd - COS Black Granite Paving
 - ▨ 200 George Street Paving Black Granite paving
 - ▨ COS standard kerb paving - COS Black Granite paving
 - ▨ Tower entry ramps, bridge and terrace paving - COS Black Granite paving
 - ▨ COS standard DBL bay enclosure. In accordance with City North-Sydney Council's Network Canopy Subcontractor's Guide. Limited to accordance with City North-Sydney Council, subject to Condition 75 of main works DA.
 - ▨ Existing Trees to be retained
 - ▨ New trees by others
 - ▨ George Street Plaza trees. Subcontracted to Lendlease. To be installed in accordance with artist David Boyd's design in collaboration with artist David Boyd.
 - ▨ Proposed outdoor seating zone
 - ▨ Granite aggregate concrete seat building jettif
 - ▨ Granite aggregate concrete seat 'pavilion'
 - ▨ Sandstone seat 'heritage grating stone'
 - ▨ Fire hydrant cupboard on Crown Lane
 - ▨ Light Pole
 - ▨ LP
 - ▨ Black Granite Paving
 - ▨ Timber Cladding
 - ▨ Cladding
 - ▨ Black Metal Fermentation Tubes
 - ▨ Black Metal Cladding



GENERAL NOTES:

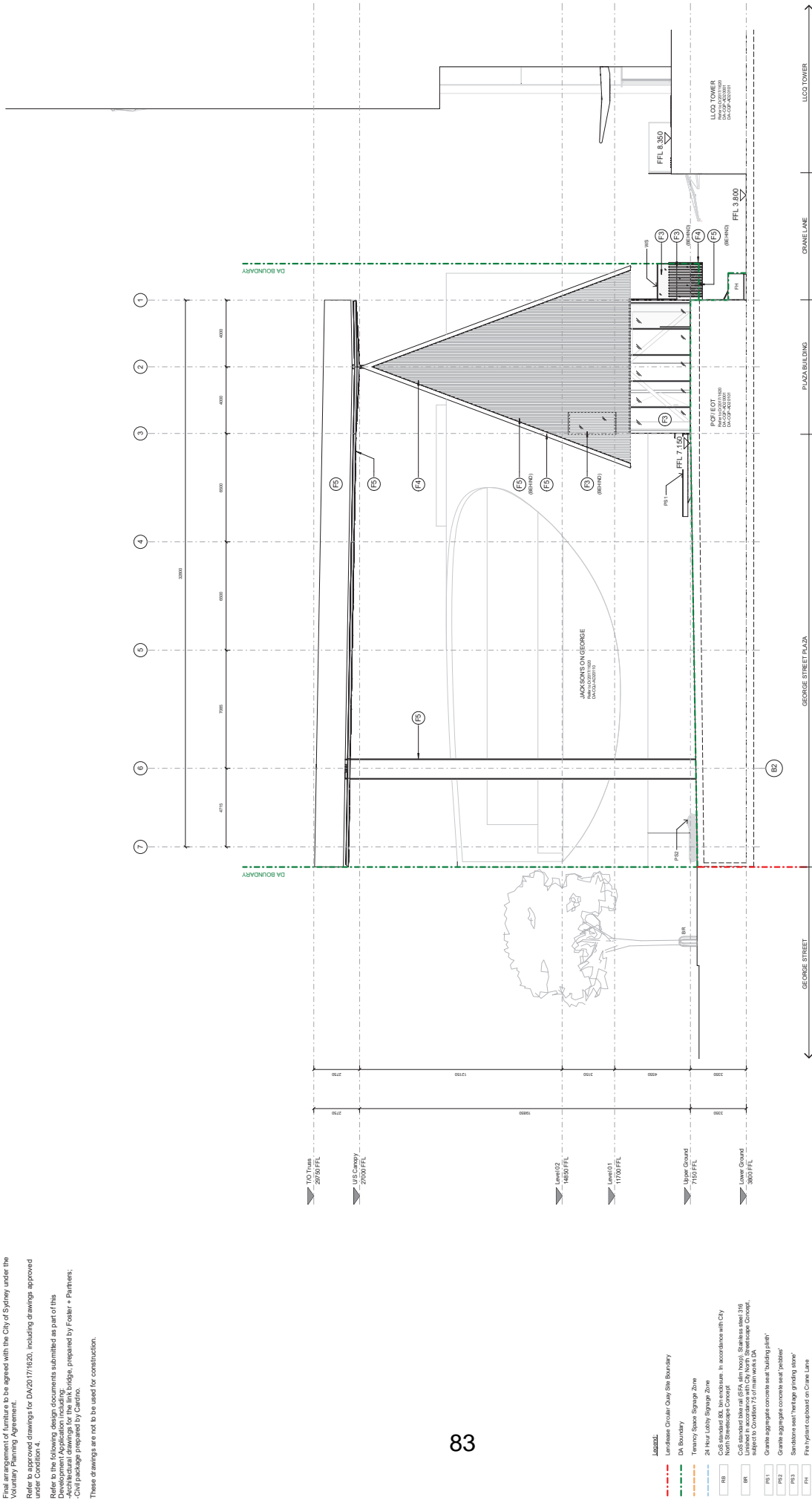
- Do not scale from this drawing
 - All dimensions are in millimetres unless noted otherwise.
 - All levels are in metres unless noted otherwise.
 - Fixture and fit out of Upper Ground floor tenancy is subject to separate application for development consent - intended for use as a cafe.
 - The dimensions and position of openings in the Artwork Canopy and the associate pattern of the feature paving and signage are to be agreed with the artist, David Boyd, and final sign off by the artist, David Boyd.
 - Final arrangement of furniture to be agreed with the City of Sydney under the Voluntary Planning Agreement.
 - Refer to approved drawings for DA 0201711620, including drawings approved under Condition 4.
 - Refer to the following design documents, submitted as part of this Development Application including:
 - Architectural drawings for the link bridge, prepared by Foster + Wheeler
 - Civil package prepared by Cadbro.
- These drawings are not to be used for construction.

- Legend:**
- Lendlease Circular Quay Site Boundary
 - - - - DA Boundary
 - Works outside of LLOD Boundary
 - George Street Paving with patterns with David Boyd, CoS Black Granite paving
 - 200 George Street Paving Black Granite paving
 - CoS standard footpath paving - CoS Black Granite paving
 - Tower entry ramp, bridge and terrace paving - CoS Black Granite paving
 - CoS standard 800 by 800mm. In accordance with City North Sydney Council
 - LPO - Lendlease Paving Overlay
 - Existing Trees to be retained
 - New trees by others
 - George Street Plaza tree, Subtotal: approx. 400L
 - New trees to be retained, including existing trees to be replaced in collaboration with artist David Boyd
 - Proposed outdoor seating zone
 - Granite aggregate concrete seat building jettif
 - Granite aggregate concrete seat 'pavilion'
 - Sandstone seat 'heritage grating stone'
 - Fire hydrant cupboard on Owen Lane
 - Light Pole
 - Black Granite Paving
 - Timber Cladding
 - Cladding
 - Black Metal Fermentation Tubes
 - Black Metal Cladding



GENERAL NOTES:

- Do not scale from this drawing.
- All dimensions are in millimetres unless noted otherwise.
- All levels are in metres unless noted otherwise.
- First use and fit out of Upper Ground floor tenancy is subject to separate application for development consent - intended for use as a cafe.
- The dimensions and position of openings in the Network Canopy and the associate pattern of the feature paving and design of the tree grille, will be subject to design development and final sign off by the artist Daniel Boyd.
- Final arrangement of furniture to be agreed with the City of Sydney under the Voluntary Planning Agreement.
- Refer to approved drawings for DA2017/1620, including drawings approved under Condition 4.
- Refer to the following design documents submitted as part of this application:
 - Architectural drawings for the lift bridge, prepared by Foster + Partners;
 - CWI package prepared by Cardno.
- These drawings are not to be used for construction.



- Legend:**
- Lendlease Circular Quay Site Boundary
 - DA Boundary
 - Treasury Space Sprung Zone
 - 24 Hour Lobby Sprung Zone
 - CoS Standard 300, see enclosure in accordance with CoS North Sydney Concept
 - CoS Standard 300 (at BSA 4th floor), see enclosure in CoS subject 33, Condition 72, in final works DA
 - RB Granite aggregate concrete seat building plan
 - PSL Granite aggregate concrete seat 'pavilion'
 - PSL Situations seat 'heritage grating stone'
 - PSL Fire hydrant cupboard on Crane Lane
 - LP Light Pole
 - WS Wind Screen
 - B Black Granite Paving
 - T Timber Cladding
 - C Cladding
 - M Black Metal Fertilisation Tubes
 - C Black Metal Cladding

Principal Architect

Adjaye Associates
 The Adjaye Group
 110, 112, 114, 116, 118, 120, 122, 124, 126, 128, 130, 132, 134, 136, 138, 140, 142, 144, 146, 148, 150, 152, 154, 156, 158, 160, 162, 164, 166, 168, 170, 172, 174, 176, 178, 180, 182, 184, 186, 188, 190, 192, 194, 196, 198, 200, 202, 204, 206, 208, 210, 212, 214, 216, 218, 220, 222, 224, 226, 228, 230, 232, 234, 236, 238, 240, 242, 244, 246, 248, 250, 252, 254, 256, 258, 260, 262, 264, 266, 268, 270, 272, 274, 276, 278, 280, 282, 284, 286, 288, 290, 292, 294, 296, 298, 300, 302, 304, 306, 308, 310, 312, 314, 316, 318, 320, 322, 324, 326, 328, 330, 332, 334, 336, 338, 340, 342, 344, 346, 348, 350, 352, 354, 356, 358, 360, 362, 364, 366, 368, 370, 372, 374, 376, 378, 380, 382, 384, 386, 388, 390, 392, 394, 396, 398, 400, 402, 404, 406, 408, 410, 412, 414, 416, 418, 420, 422, 424, 426, 428, 430, 432, 434, 436, 438, 440, 442, 444, 446, 448, 450, 452, 454, 456, 458, 460, 462, 464, 466, 468, 470, 472, 474, 476, 478, 480, 482, 484, 486, 488, 490, 492, 494, 496, 498, 500, 502, 504, 506, 508, 510, 512, 514, 516, 518, 520, 522, 524, 526, 528, 530, 532, 534, 536, 538, 540, 542, 544, 546, 548, 550, 552, 554, 556, 558, 560, 562, 564, 566, 568, 570, 572, 574, 576, 578, 580, 582, 584, 586, 588, 590, 592, 594, 596, 598, 600, 602, 604, 606, 608, 610, 612, 614, 616, 618, 620, 622, 624, 626, 628, 630, 632, 634, 636, 638, 640, 642, 644, 646, 648, 650, 652, 654, 656, 658, 660, 662, 664, 666, 668, 670, 672, 674, 676, 678, 680, 682, 684, 686, 688, 690, 692, 694, 696, 698, 700, 702, 704, 706, 708, 710, 712, 714, 716, 718, 720, 722, 724, 726, 728, 730, 732, 734, 736, 738, 740, 742, 744, 746, 748, 750, 752, 754, 756, 758, 760, 762, 764, 766, 768, 770, 772, 774, 776, 778, 780, 782, 784, 786, 788, 790, 792, 794, 796, 798, 800, 802, 804, 806, 808, 810, 812, 814, 816, 818, 820, 822, 824, 826, 828, 830, 832, 834, 836, 838, 840, 842, 844, 846, 848, 850, 852, 854, 856, 858, 860, 862, 864, 866, 868, 870, 872, 874, 876, 878, 880, 882, 884, 886, 888, 890, 892, 894, 896, 898, 900, 902, 904, 906, 908, 910, 912, 914, 916, 918, 920, 922, 924, 926, 928, 930, 932, 934, 936, 938, 940, 942, 944, 946, 948, 950, 952, 954, 956, 958, 960, 962, 964, 966, 968, 970, 972, 974, 976, 978, 980, 982, 984, 986, 988, 990, 992, 994, 996, 998, 1000

Collaborating Architect:

architectus
 11, 13, 15, 17, 19, 21, 23, 25, 27, 29, 31, 33, 35, 37, 39, 41, 43, 45, 47, 49, 51, 53, 55, 57, 59, 61, 63, 65, 67, 69, 71, 73, 75, 77, 79, 81, 83, 85, 87, 89, 91, 93, 95, 97, 99, 101, 103, 105, 107, 109, 111, 113, 115, 117, 119, 121, 123, 125, 127, 129, 131, 133, 135, 137, 139, 141, 143, 145, 147, 149, 151, 153, 155, 157, 159, 161, 163, 165, 167, 169, 171, 173, 175, 177, 179, 181, 183, 185, 187, 189, 191, 193, 195, 197, 199, 201, 203, 205, 207, 209, 211, 213, 215, 217, 219, 221, 223, 225, 227, 229, 231, 233, 235, 237, 239, 241, 243, 245, 247, 249, 251, 253, 255, 257, 259, 261, 263, 265, 267, 269, 271, 273, 275, 277, 279, 281, 283, 285, 287, 289, 291, 293, 295, 297, 299, 301, 303, 305, 307, 309, 311, 313, 315, 317, 319, 321, 323, 325, 327, 329, 331, 333, 335, 337, 339, 341, 343, 345, 347, 349, 351, 353, 355, 357, 359, 361, 363, 365, 367, 369, 371, 373, 375, 377, 379, 381, 383, 385, 387, 389, 391, 393, 395, 397, 399, 401, 403, 405, 407, 409, 411, 413, 415, 417, 419, 421, 423, 425, 427, 429, 431, 433, 435, 437, 439, 441, 443, 445, 447, 449, 451, 453, 455, 457, 459, 461, 463, 465, 467, 469, 471, 473, 475, 477, 479, 481, 483, 485, 487, 489, 491, 493, 495, 497, 499, 501, 503, 505, 507, 509, 511, 513, 515, 517, 519, 521, 523, 525, 527, 529, 531, 533, 535, 537, 539, 541, 543, 545, 547, 549, 551, 553, 555, 557, 559, 561, 563, 565, 567, 569, 571, 573, 575, 577, 579, 581, 583, 585, 587, 589, 591, 593, 595, 597, 599, 601, 603, 605, 607, 609, 611, 613, 615, 617, 619, 621, 623, 625, 627, 629, 631, 633, 635, 637, 639, 641, 643, 645, 647, 649, 651, 653, 655, 657, 659, 661, 663, 665, 667, 669, 671, 673, 675, 677, 679, 681, 683, 685, 687, 689, 691, 693, 695, 697, 699, 701, 703, 705, 707, 709, 711, 713, 715, 717, 719, 721, 723, 725, 727, 729, 731, 733, 735, 737, 739, 741, 743, 745, 747, 749, 751, 753, 755, 757, 759, 761, 763, 765, 767, 769, 771, 773, 775, 777, 779, 781, 783, 785, 787, 789, 791, 793, 795, 797, 799, 801, 803, 805, 807, 809, 811, 813, 815, 817, 819, 821, 823, 825, 827, 829, 831, 833, 835, 837, 839, 841, 843, 845, 847, 849, 851, 853, 855, 857, 859, 861, 863, 865, 867, 869, 871, 873, 875, 877, 879, 881, 883, 885, 887, 889, 891, 893, 895, 897, 899, 901, 903, 905, 907, 909, 911, 913, 915, 917, 919, 921, 923, 925, 927, 929, 931, 933, 935, 937, 939, 941, 943, 945, 947, 949, 951, 953, 955, 957, 959, 961, 963, 965, 967, 969, 971, 973, 975, 977, 979, 981, 983, 985, 987, 989, 991, 993, 995, 997, 999, 1000

Client / Developer:

Lendlease
 Lendlease Circular Quay
 Plaza Building and George Street Plaza
 180 George Street SYDNEY NSW 2000

Date:

08/11/2019
 Project Status:
 Development Application

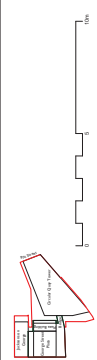
Drawing Title:

GA Elevation - South - Zone 2
 Drawing No.:
 DA_CQC_AD410200

Revision:

0.1
 Scale:
 1 : 100 @ B1

Rev	Description	Date
0.1	For Development Application	08/11/2019
0.2	Revised for Meet	

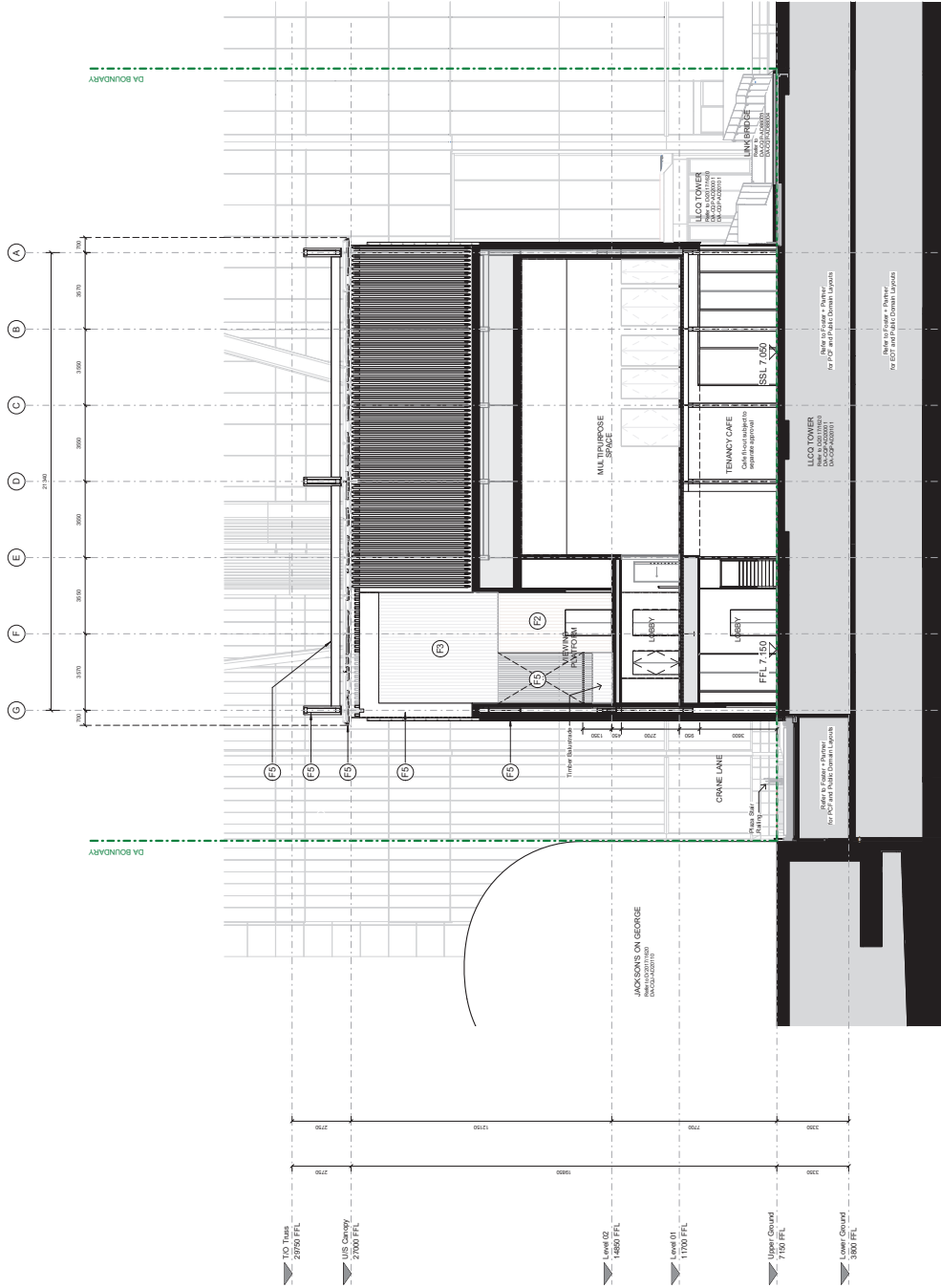


GENERAL NOTES:

Do not scale from this drawing.
 All dimensions are in millimetres unless noted otherwise.
 All levels are in metres unless noted otherwise.
 First use and fit out of Upper Ground floor tenancy is subject to separate application for development consent - intended for use as a cafe.
 The dimensions and position of openings in the Artnow Canopy and the associate pattern of the feature paving and design of the tree grille, will be subject to design development and final sign off by the artist David Boyd.
 Final arrangement of furniture to be agreed with the City of Sydney under the Voluntary Planning Agreement.
 Refer to approved drawings for DA2017/1620, including drawings approved under Condition 4.

Refer to the following design documents submitted as part of this application:
 -Architectural drawings for the link bridge, prepared by Foster + Partners;
 -CWI package prepared by Cardno.

These drawings are not to be used for construction.

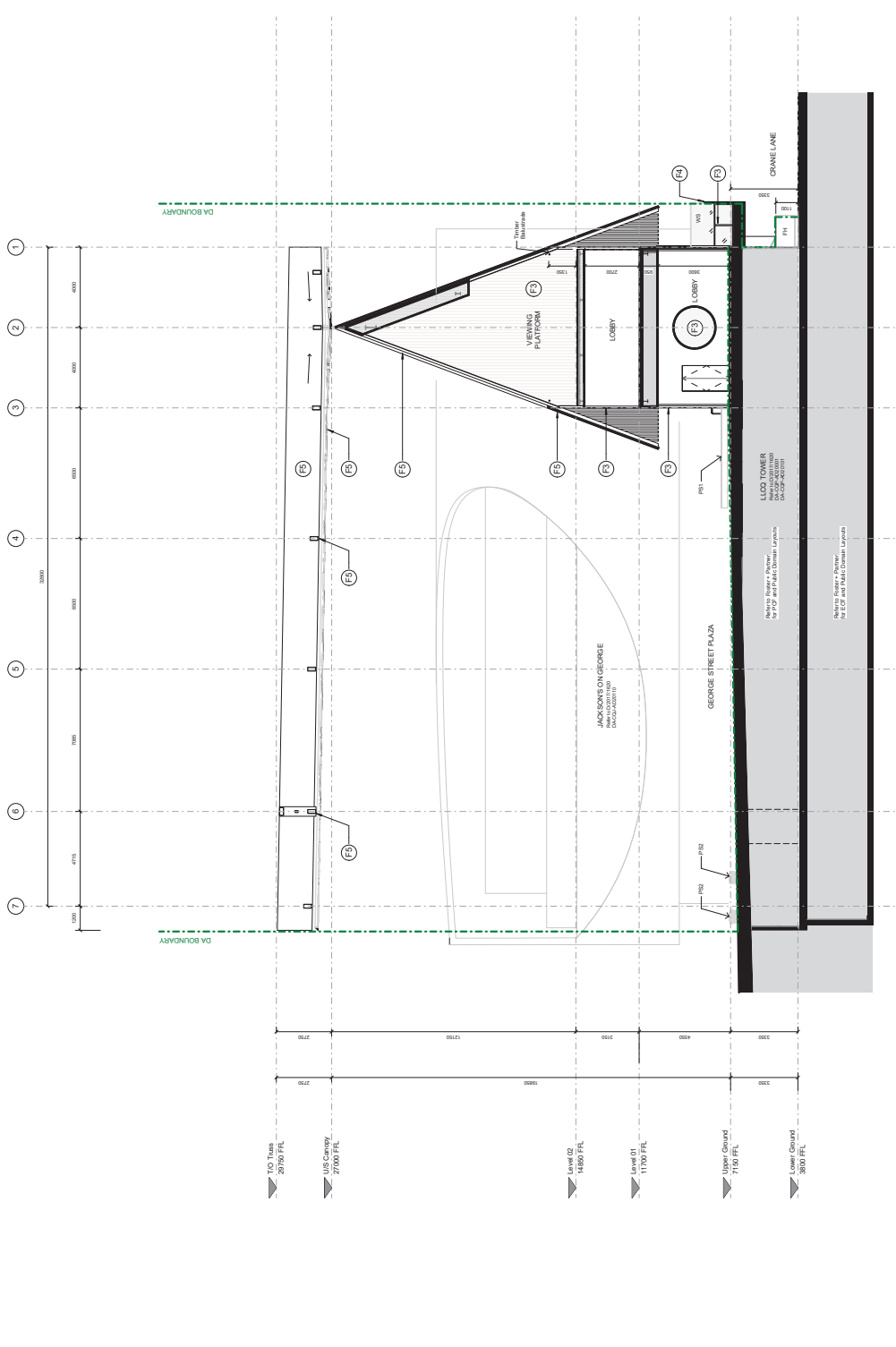


Legend

- Lendlease Circular Quay Site Boundary
- DA Boundary
- Tenancy Space Sprays Zone
- 24 Hour Lobby Sprays Zone
- RB CoS Standard RB, fire enclosure in accordance with C74 North Streetscape Concept
- BR CoS Standard brick (R4 dim hoop), Stainless steel S16
- PRC CoS Standard brick (R4 dim hoop), Stainless steel S16 subject to Condition 72 of the DA landscape Concept.
- PRC Granite aggregate concrete seat building plan
- PRC Granite aggregate concrete seat 'pavilion'
- PRC Stainless steel heritage grating, stone
- ZH Fire hydrant cupboard on Crane Lane
- LP Light Pole
- WS Wind Screen
- Black Granite Paving
- Timber Cladding
- Cladding
- Black Metal Fermentation Tubes
- Black Metal Cladding

GENERAL NOTES:

- Do not scale from this drawing.
- All dimensions are in millimetres unless noted otherwise.
- All levels are in metres unless noted otherwise.
- First use and fit out of Upper Ground floor tenancy is subject to separate application for development consent - intended for use as a cafe.
- The dimensions and position of openings in the Network Canopy and the associate pattern of the feature paving and design of the tree grille, will be subject to design development and final sign off by the artist David Boyd.
- Final arrangement of furniture to be agreed with the City of Sydney under the Voluntary Planning Agreement.
- Refer to approved drawings for DA2017/1620, including drawings approved under Condition 4.
- Refer to the following design documents submitted as part of this application:
 - Architectural drawings for the lift bridge, prepared by Foster + Partners;
 - CWI package prepared by Cadroo.
- These drawings are not to be used for construction.



- Legend:**
- 1m Base Circular Quay Site Boundary
 - DA Boundary
 - Treasury Space Signage Zone
 - 24 Hour Lobby Signage Zone
 - COS Standard 300 fire enclosure in accordance with CNY
 - North Signage Concept
 - COS Standard 300 fire enclosure in accordance with CNY
 - COS Standard 300 fire enclosure in accordance with CNY
 - Grande signage concrete seat/pedestal
 - Grande signage concrete seat/pedestal
 - Stonework seat/terrace grating stone
 - Fire hydrant cupboard on Crane Lane
 - Light Pole
 - Wind Screen
 - Black Granite Paving
 - Timber Cladding
 - Cladding
 - Black Metal Fertilisation Tubes
 - Black Metal Cladding

Principal Architect: **Adjaye Associates**
 The Adjaye Group, 100 Abchurch Lane, London EC4N 3DF, UK
 Phone: +44 (0)20 7518 4140
 email: info@adjaye.com

Collaborating Architect: **architectus™**
 18 Macquarie Street, Sydney NSW 2000
 T: +61 2 9252 8400 F: +61 2 9252 8600
 www.architectus.com.au

Client / Developer: Lendlease Circular Quay
 Plaza Building and George Street Plaza
 180 George Street SYDNEY NSW 2000

Date: 08/11/2019
Project Status: Development Application

Drawing Title: GA Section - Cross Sections 1 - Zone 2
Drawing No.: DA_CQC_AD52.1200

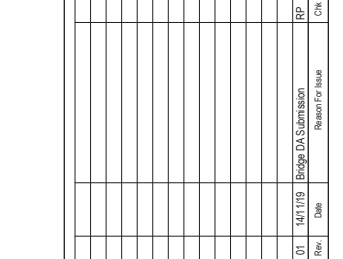
Revision: 0.1
Scale: 1 : 100 @ B1

Rev	Description	Date
0.1	For Development Application	08/11/2019
0.2	Revised for Meet	

Scale: 1 : 100 @ B1

- Client Notes**
1. Check scale drawings. Dimensions govern.
 2. All dimensions are in millimetres unless noted otherwise.
 3. All dimensions must be noted on drawings.
 4. All dimensions must be noted on drawings.
 5. Foster + Partners shall be notified in writing of any discrepancies.
 6. Any areas indicated on this sheet are approximate and indicative only.

Rev	Date	Bridge DA Submission	RP	Chk
01	14/11/19	Bridge DA Submission		



Client
Level 14 Tower Three
International Towers Sydney
 Barangaroo NSW 2000

Principal Architect
Foster + Partners
L 19 MLC Centre 19 Market Place
Sydney NSW 2000
Rocks 4th 20 Market Road
London SW11 1AN
T +61(0)20 7738 6455
F +61 2 852 2800
www.fosterpartners.com

Executive Architect
architectus
L 19 MLC Centre 19 Market Place
Sydney NSW 2000
Rocks 4th 20 Market Road
London SW11 1AN
T +61(0)20 7738 6455
F +61 2 852 2800
www.architectus.com.au

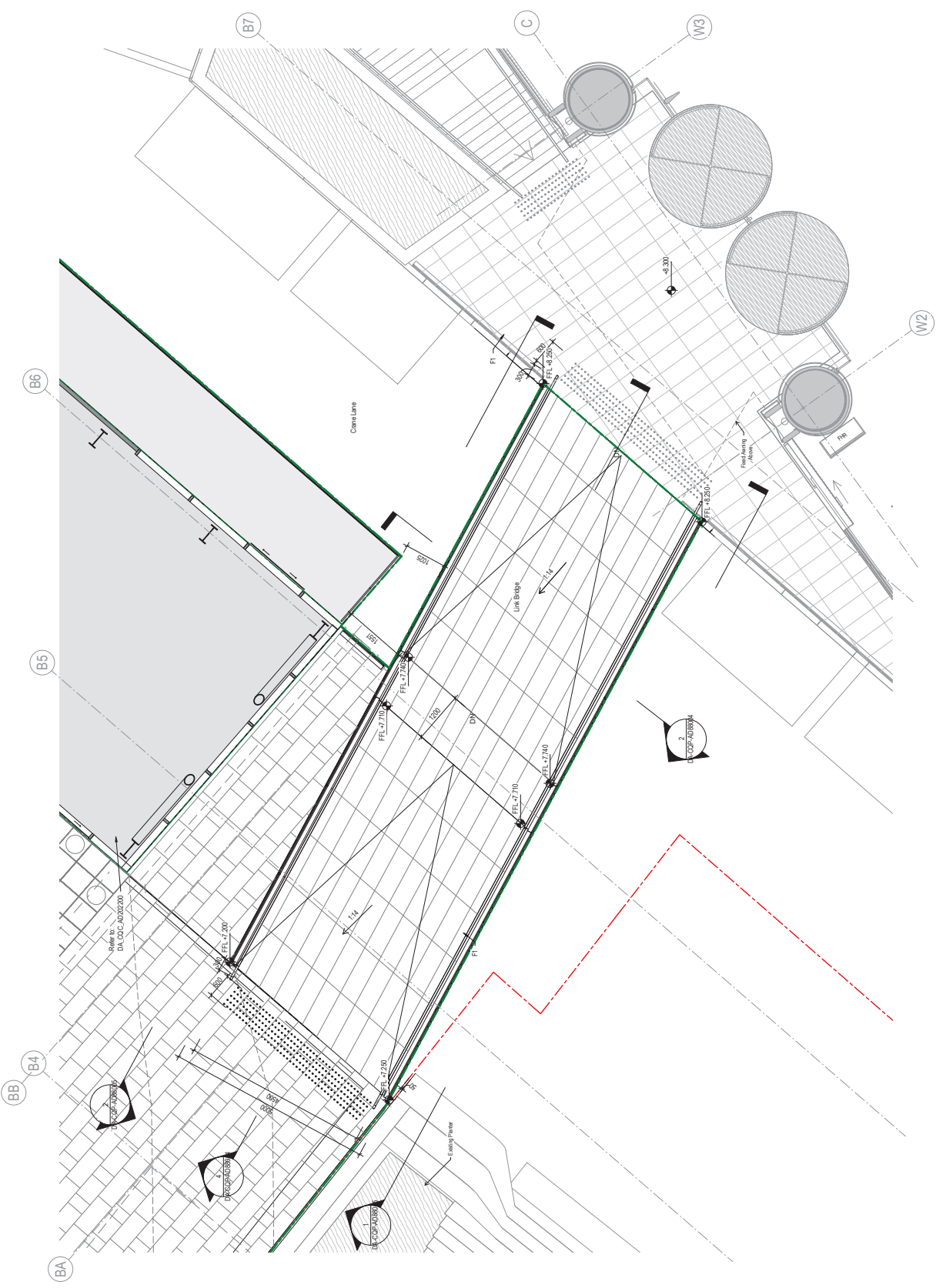
Executive Landscape Architect
Andersen Hunter Home
95 The Kingsway
Cronulla NSW 2230
T +61(0)20 939 9999
www.andersenhunterhome.com

Project
Lendlease Circular Quay
Sydney
Australia

Title
Link Bridge
GA Plan

Scale at A3/A1
Sheet First Issue Date
1: 50
1: 50

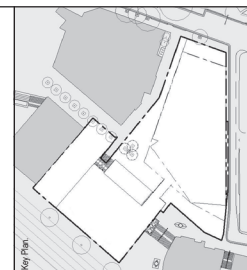
Sheet Number
Revision
DA-CQP-AD88003
01



- Legend:**
- Lendlease Circular Quay Boundary
 - DA Boundary
 - Black Granite Paving
 - Glass
 - Grey Metal Cladding
 - Mirror Effect Metal Cladding
 - F1
 - F3
 - F6
 - F7

- Client Notes**
1. Do not scale drawings. Dimensions govern.
 2. All dimensions are in millimetres unless noted otherwise.
 3. All dimensions are in millimetres unless noted otherwise.
 4. All dimensions are in millimetres unless noted otherwise.
 5. Foster + Partners shall be notified in writing of any discrepancies.
 6. Any areas indicated on this sheet are approximate and indicative only.

Rev.	Date	Bridge DA Submission	RP	Chk
01	14/11/19	Bridge DA Submission		
		Reason For Issue		



Foster + Partners
Principal Architect
L 19 MLC Centre 19 Market Place
Sydney NSW 2000
London SW11 1AN
T +61 (0)20 7738 6655
F +61 (0)20 7738 6655
www.fosterpartners.com

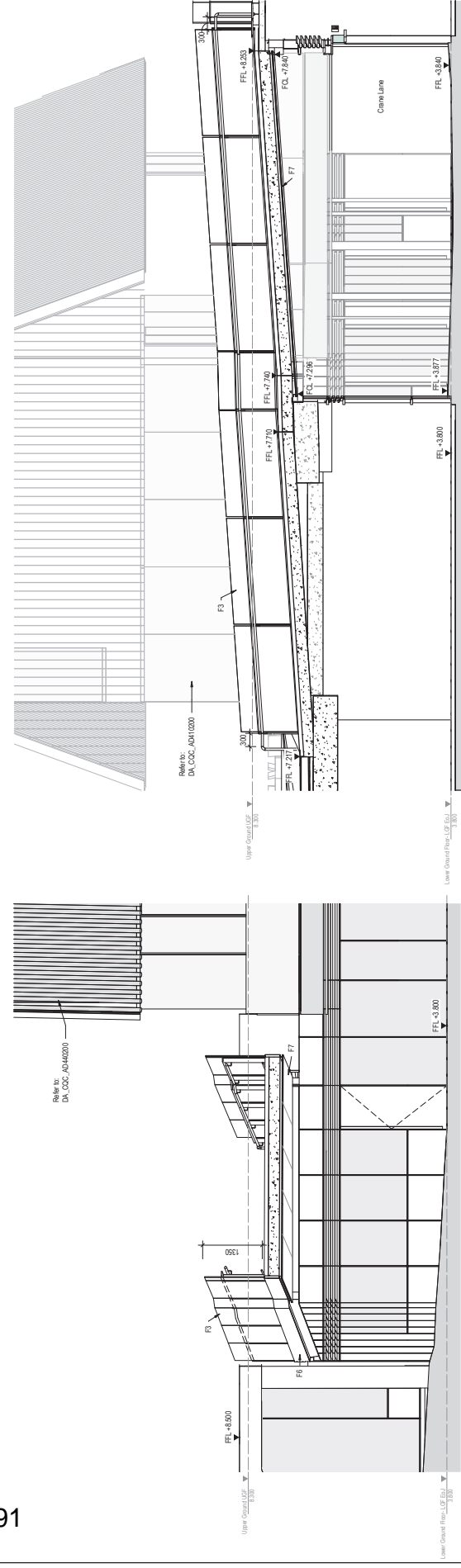
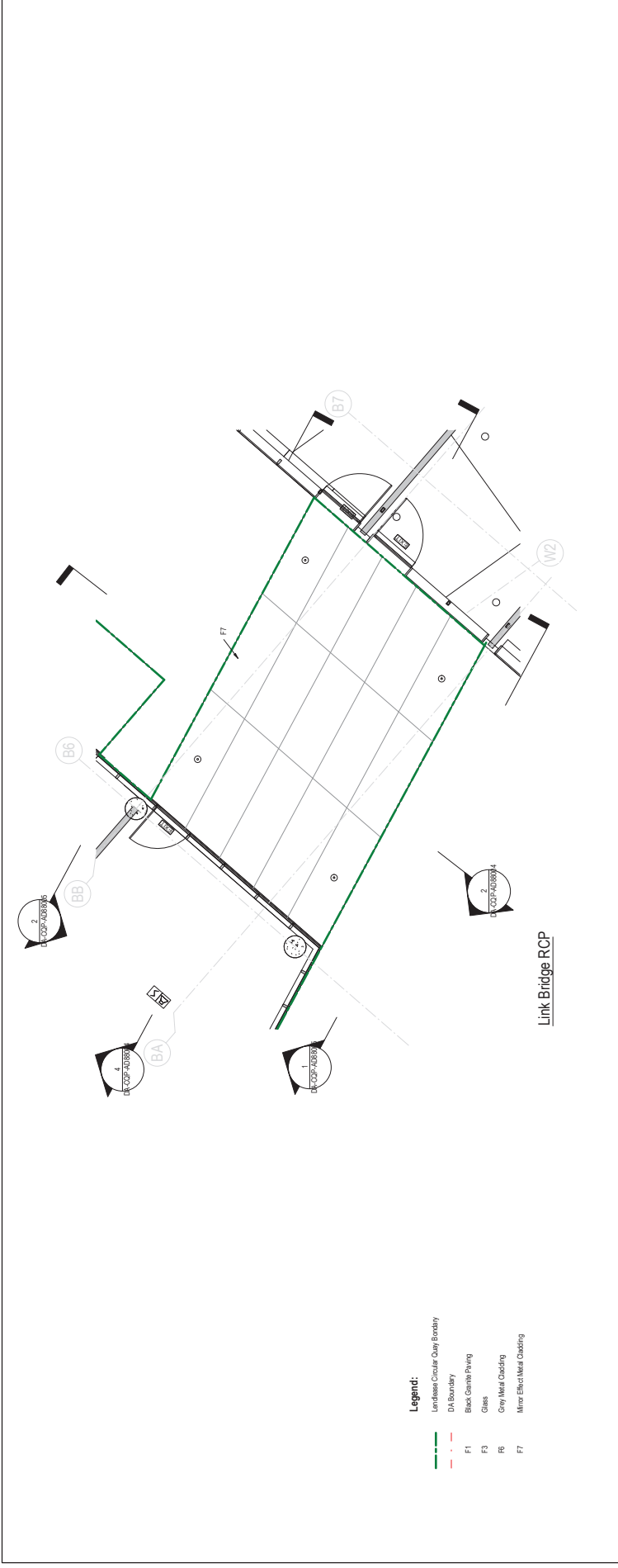
architectus
Executive Architect
L 19 MLC Centre 19 Market Place
Sydney NSW 2000
London SW11 1AN
T +61 (0)20 7738 6655
F +61 (0)20 7738 6655
www.architectus.com.au

Andersen Hunter Home
Executive Landscape Architect
95 The Skyway
Crows Nest NSW 2230
T +61 (0)2 9550 1111
www.andersenhunterhome.com

Project
Lendlease Circular Quay
Sydney
Australia

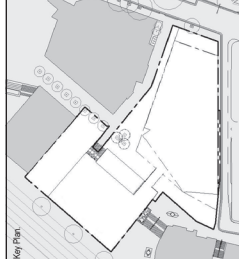
Title
Link Bridge
RCP and Sections

Project No	2576-1	Scale at SS0 A1	1:50
Sheet First Issue Date		Revision	01
Sheet Number	DA-CQP-AD88004		



- Client Notes**
1. Do not scale drawings. Dimensions govern.
 2. All dimensions are in millimetres unless noted otherwise.
 3. All dimensions are in millimetres unless noted otherwise.
 4. All dimensions are in millimetres unless noted otherwise.
 5. Foster + Partners shall be notified in writing of any discrepancies.
 6. Any areas indicated on this sheet are approximate and indicative only.

Rev.	Date	Bridge DA Submission	Reason For Issue	RP	Chk
01	14/11/19				



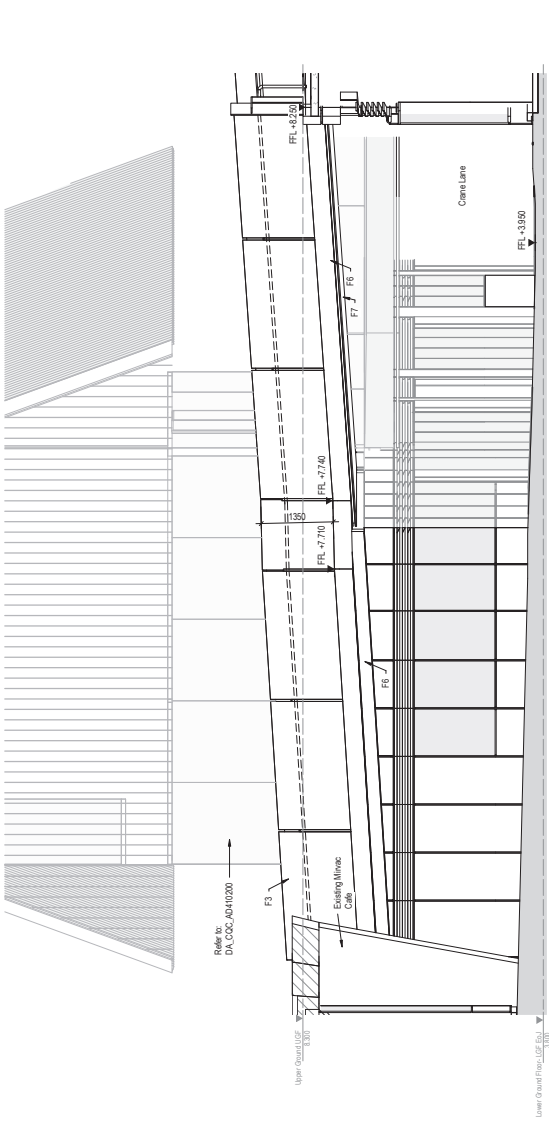
Foster + Partners
Principal Architect
L 19 MLC Centre 19 Market Place
Sydney NSW 2000
Riverside 20 Market Road
London SW11 1AN
T +61(0)20 7738 6455
F +61 2 8522 8900
www.fosterpartners.com

architectus™
Executive Architect
L 19 MLC Centre 19 Market Place
Sydney NSW 2000
Riverside 20 Market Road
London SW11 1AN
T +61(0)20 7738 6455
F +61 2 8522 8900
www.architectus.com.au

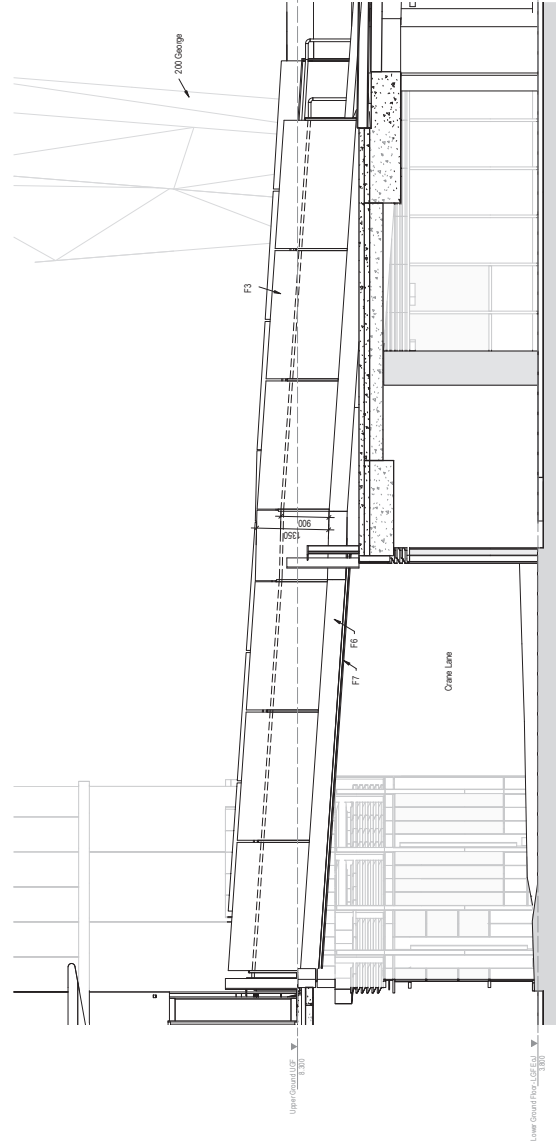
Andersen Hunter Home
Executive Landscape Architect
95 The Kilgarry
Cronulla NSW 2230
T +61(0)20 7738 6455
www.andersenhunterhome.com

Project
Lendlease Circular Quay
Sydney
Australia

Project No	2576-1	Scale at SQA 1	1:50
Sheet First Issue Date		Revision	01
Sheet Number	DA-CQP-AD88005		



Link Bridge Elevation 1



Link Bridge Elevation 2

- Legend:**
- Lendlease Circular Quay Boundary
 - DA Boundary
 - Black Granite Paving
 - Glass
 - Grey Metal Cladding
 - Mirror Black Metal Cladding
 - F1
 - F3
 - F6
 - F7